

Futuri Progetti Urbani
www.futurprogettiurbani.com

CHIESA DI SAN GIUSEPPE OPERAIO

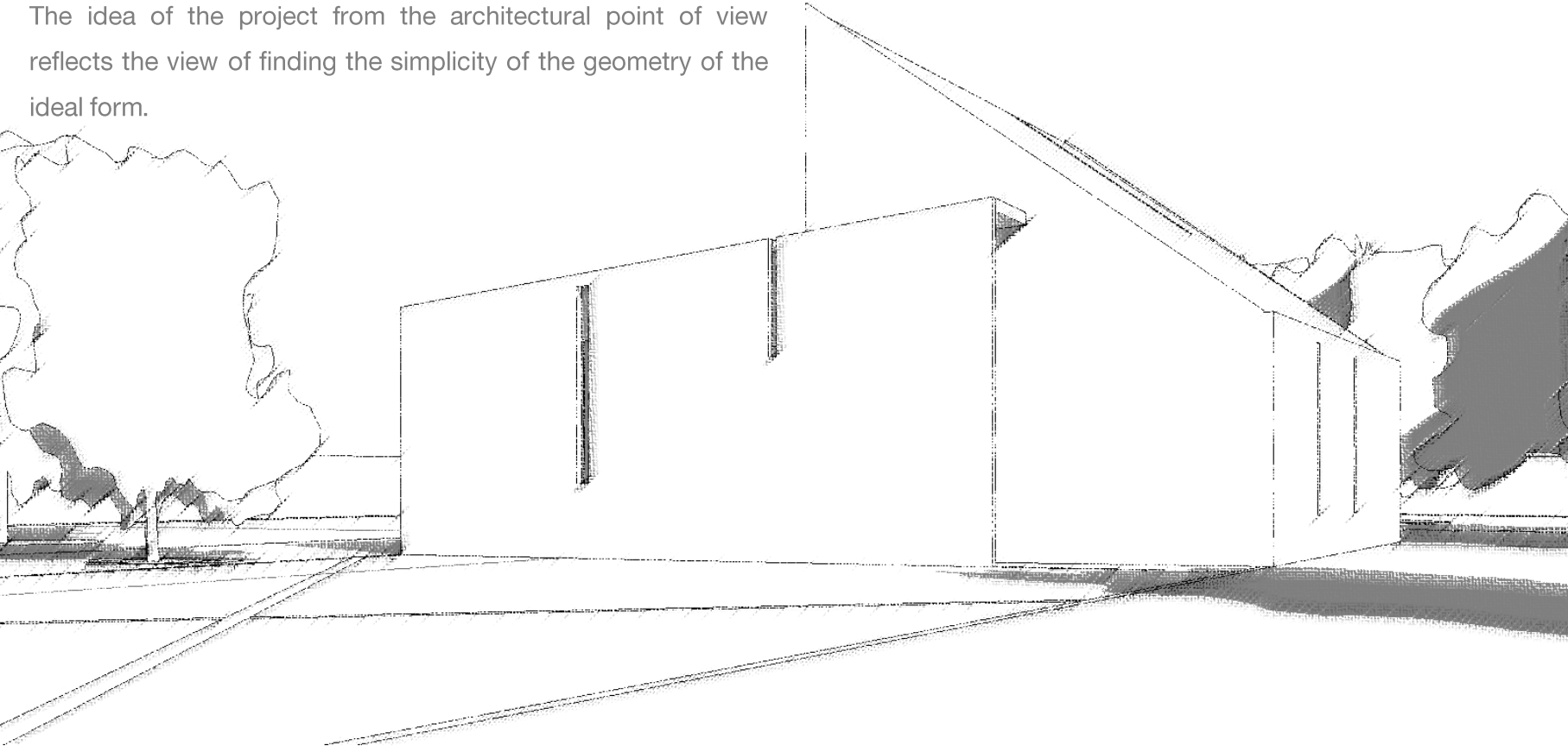
Pianura | Napoli
2015



©2015

The project for the church of St. Joseph the Worker was born from the will to give the community a place of encounter with God, a place of peace and hope.

The idea of the project from the architectural point of view reflects the view of finding the simplicity of the geometry of the ideal form.







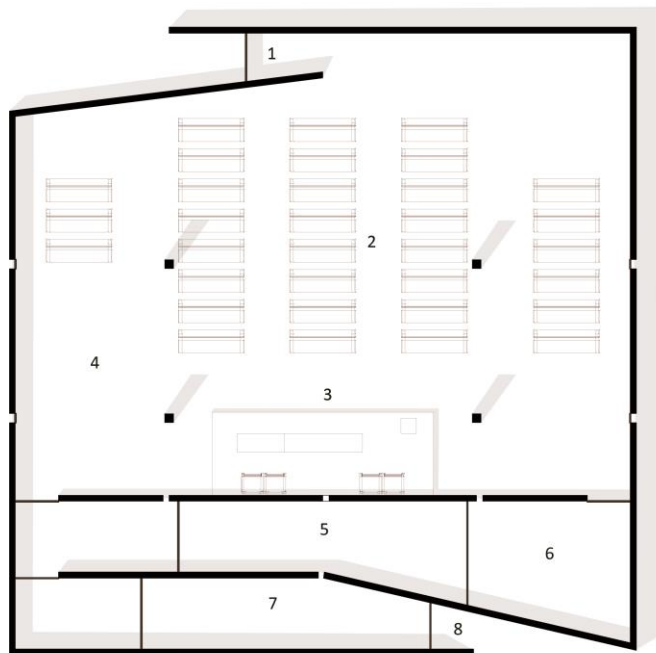
The form is intended as a symbolic reference to a house first shelter of every man. A balance between modernity and tradition. The entrance on the main façade is hidden from the main front.

The main and side entrance at the same time leads to the central nave, the heart of the entire complex.

In addition to the windows on the sides of a central structure of the light path runs along the entire nave and that intersects orthogonally with a hole placed above the high altar.

A cross of light for direct illumination of the entire body.

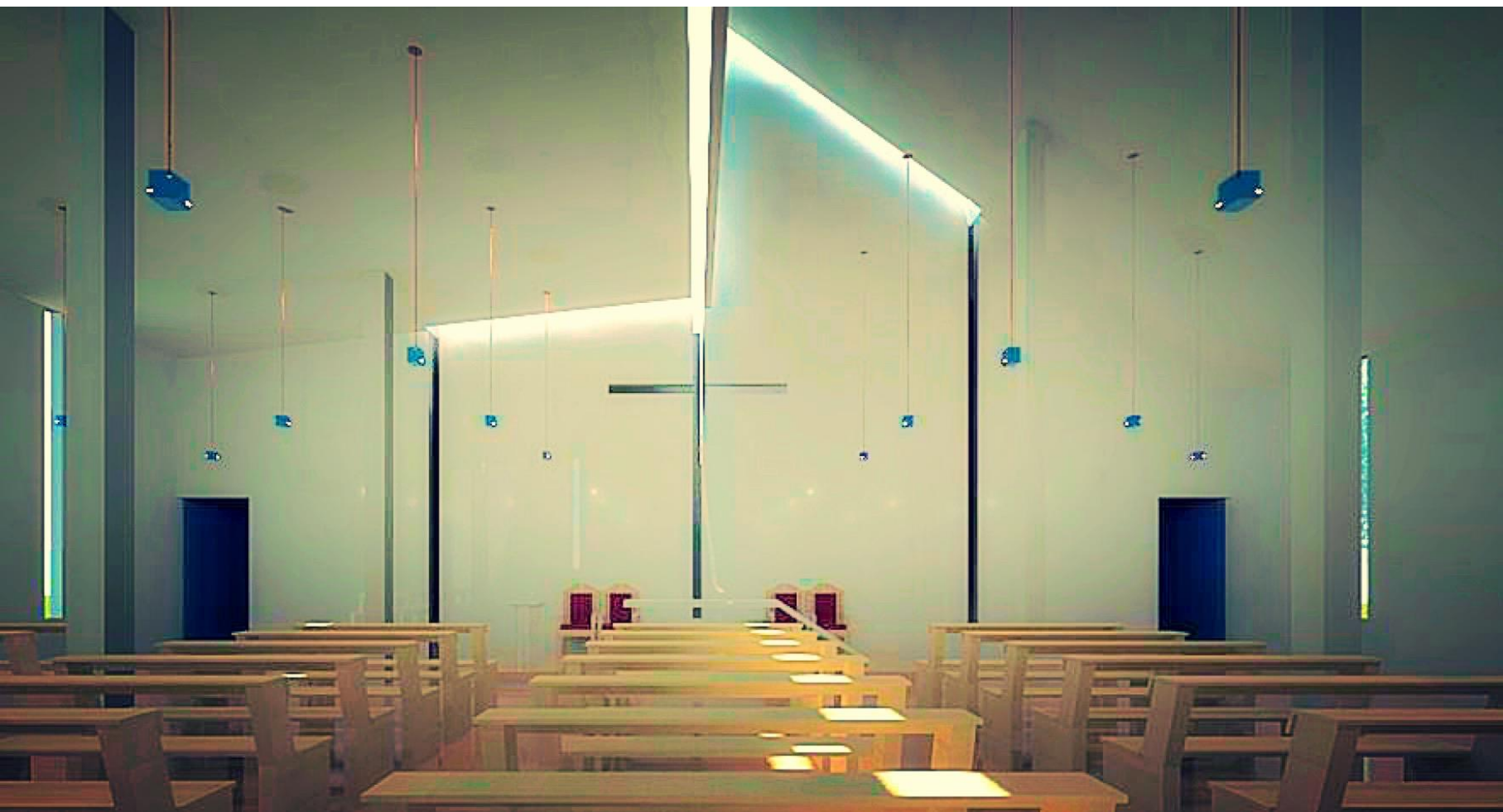


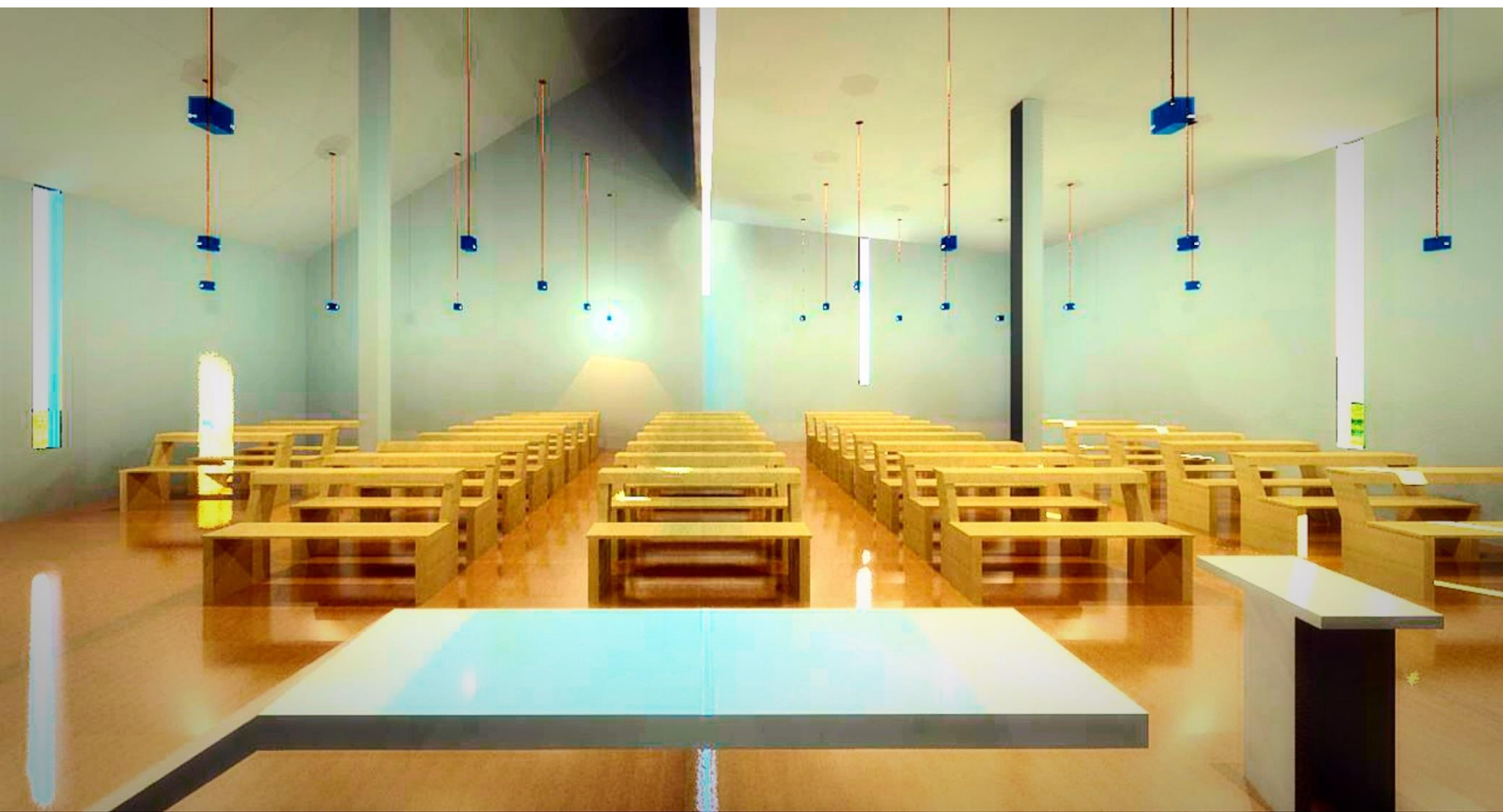


Planimetria Plan

- 1 | Ingresso principale
- 2 | Navata centrale
- 3 | Altare maggiore
- 4 | Coro
- 5 | Sagrestia
- 6 | Cappella di S. Giuseppe Operaio
- 7 | Uffici e servizi
- 8 | Ingresso secondario

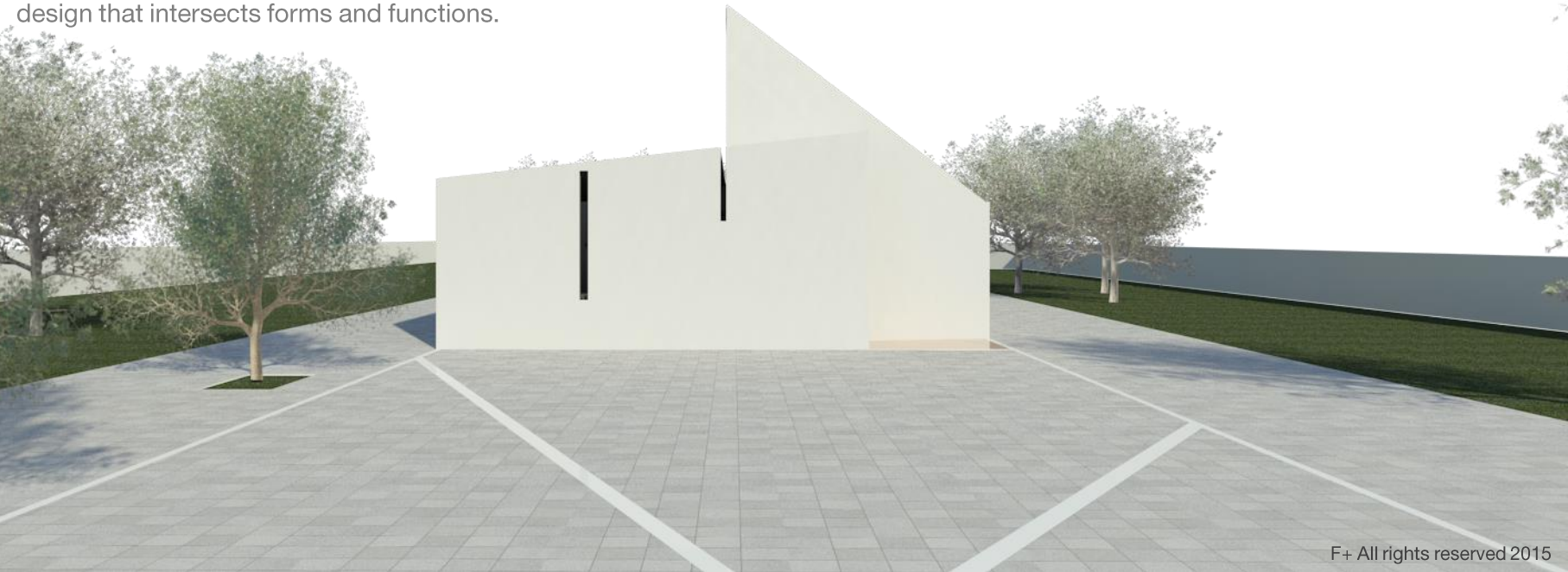
- 1 | Main entrance
- 2 | Nave
- 3 | Altar
- 4 | Choir space
- 5 | Sacristy
- 6 | Chapel of S. Giuseppe Operaio
- 7 | Offices and Services
- 8 | Side entrance

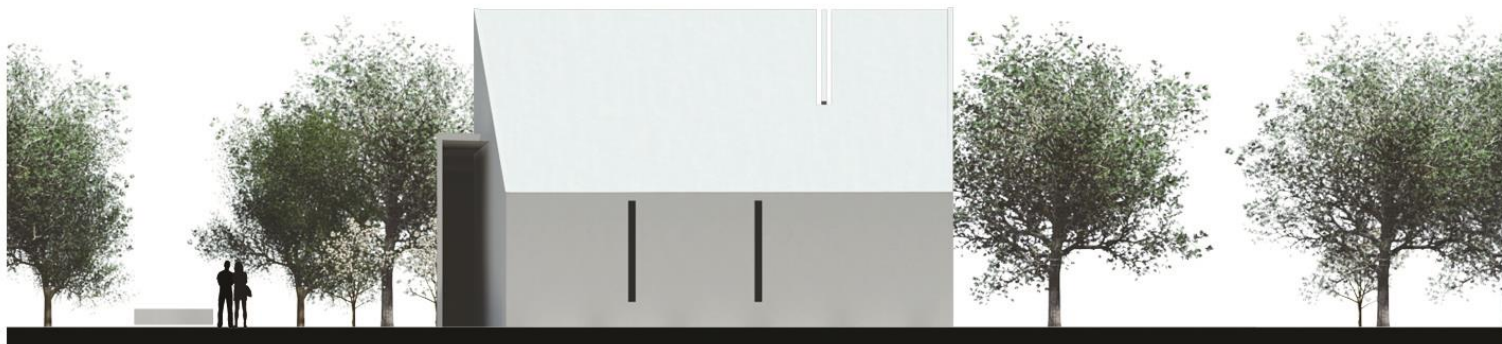




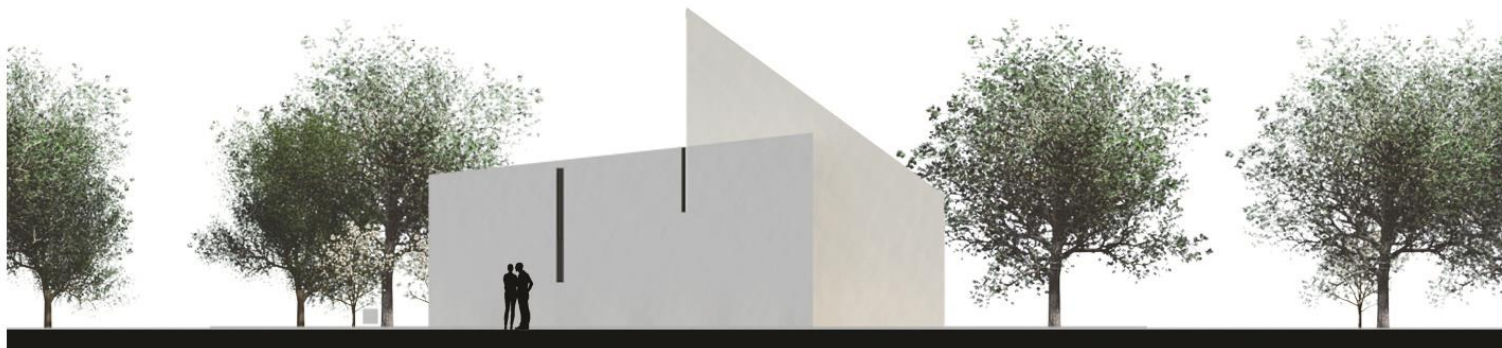
Located to the right of the space the choir
while the left chapel dedicated to St. Joseph.
Behind the altar it has been positioned the
sacristy.

The square floor plan favors the harmony of
the interior spaces through a simple and clean
design that intersects forms and functions.

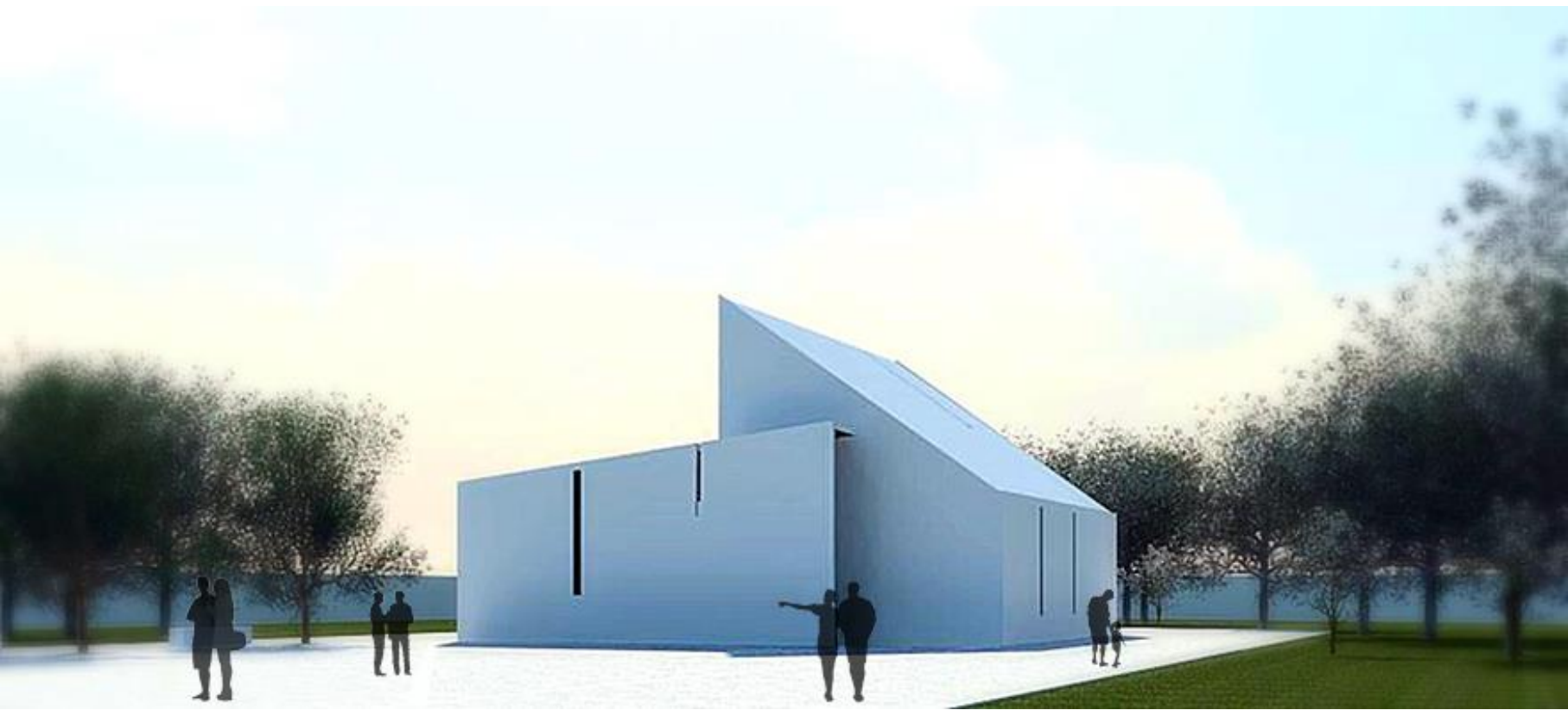




Prospetto Sud | Est
Front view South | East



Prospetto Ovest
Front view West





info@fffepiu.com
FUTURI PROGETTI URBANI
via ottavio caiazzo 4
napoli