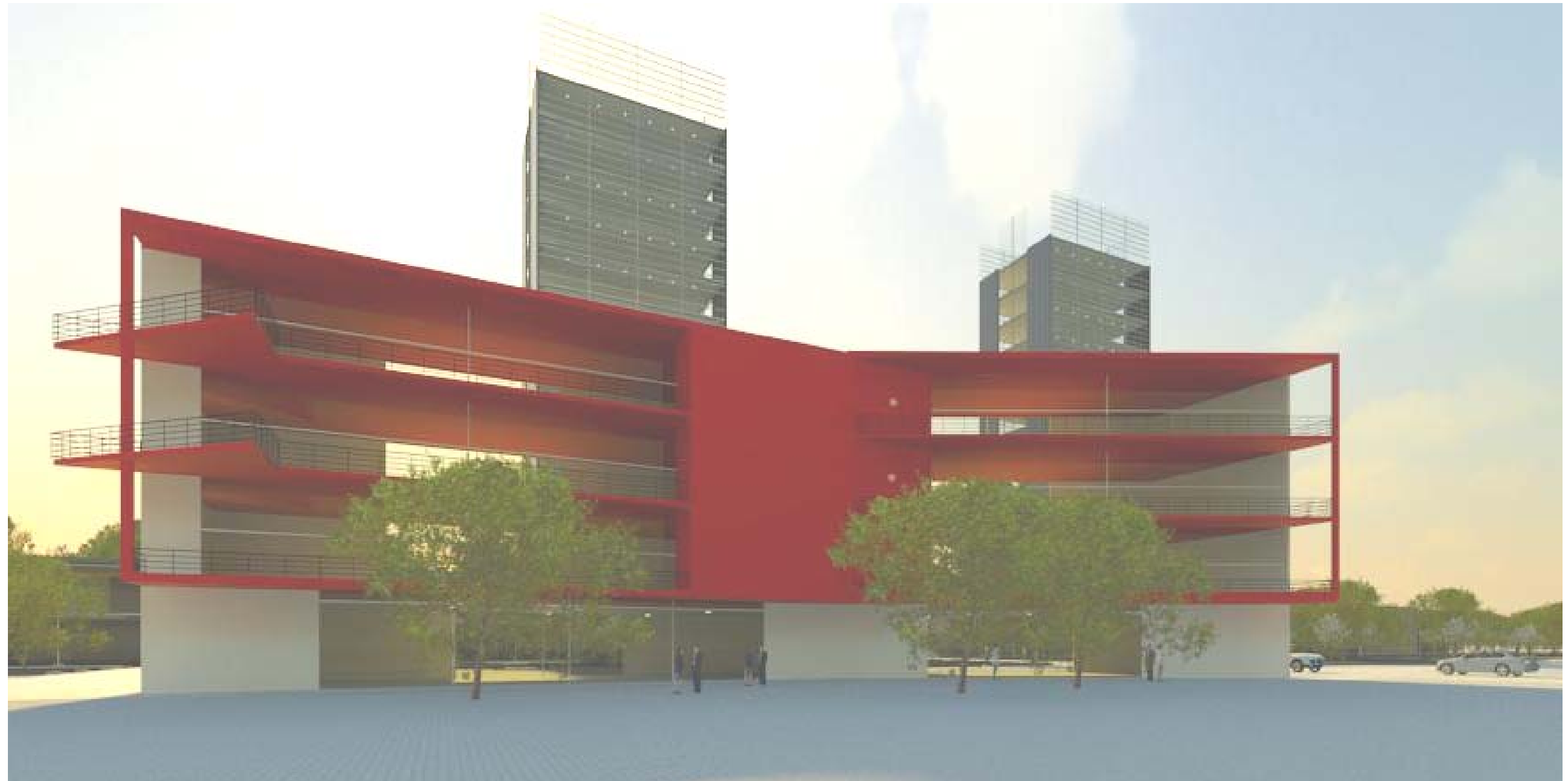


NG010

Zagreb

NOVI GRADUAL





Introduction

The project idea was created in harmony with the directions proposed by the auctioneer and the administration of the competition in Zagreb.

The meaning and the image that come from some urban areas, can become an interesting potential for the design of places to "revitalize", where is possible to provide new forms of imagination of the city and its spaces.

Possibilities are as many as choices that can be made by analyzing the natural features of the place, history and morphology of the city.

The site represent a node of considerable strategic importance, not only for the city of Zagreb, but for the entire region.

The strategic relevance of the area comes from both geographical position, (the site is situated in the south of the city center, hearth of Zagreb) and infrastructural dotation (motorway, railway, tramway).

The plots in the area are not homogeneous and the orography of the site is characterized by different levels of altitude.

The infrastructures on the area generate a barrier between the site and the surroundings , with no connection between the different systems of transportation.

In the project we decide to solve the problem of accessibility in the area, by enhancing the transversal

permeability and providing a real interchange between the different transport systems.

Starting from these issues and from the design guidelines proposed in the Notice of Competition, we formulated our project on the idea of place livability, trying to create livable spaces for the people.

It's clear that this site is qualified to become a symbolic place as the main "gate" of the city.

There are many relevant issues to deal: the relationship between Old Town and "Novi Grad"; the relationship between the city and the river; the importance of the infrastructural network and sustainable mobility.

These issues were the basis of our project called "Novi **Gradual**".

Dual: Zagreb and Novi Grad

The aim of the project is to find a common code that makes dialogue between the formal, logistical and environmental characteristics of these different places: the old town and the new city.

So we must imagine an architecture that is no longer definitive, as it was in the past century.

This architecture is made of open and unsettled systems, and follows the logic of relational economy, entertainment and common work.

Introduction

It will be a permeable urban settlement, as an open filter. This system doesn't work on the dualism between "inner private spaces" and "external open spaces", but on the relationship between space and territory.

Working this way we avoid to close the different zones with definite and inflexible boundaries.

Gradual: the infrastructural system.

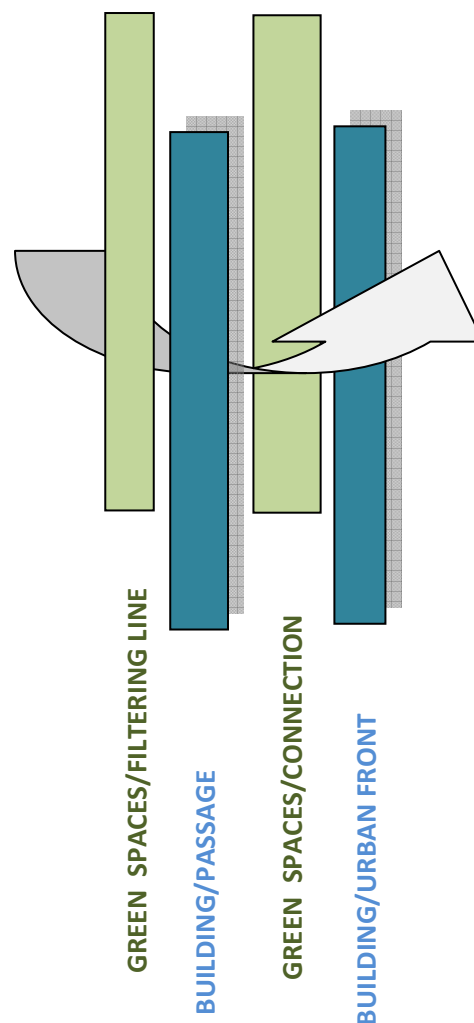
Infrastructural system is one of the relevant issues in the project. We started from the existing transportation systems to formulate the settlement.

An appropriate approach may be to design an infrastructure that includes roads, cycleways, pedestrian path, lighting and facilities and natural elements.

The Novi Grad is a place that must offer a GRADUAL interchange between different transport systems.

A new system of roads also offer a new design for public and private spaces.

We offer a new urban design with distinctive and relevant elements in the scheme.



Design choices

DESIGN CHOICES

The main objective of the project is to create a sustainable urban settlement, self-sufficient and able to promote new development scenarios to a wider geographical scale.

A project, even if it involves a part of town, cannot fail to take account of the urban structure of which is essential.

For this reason, the project will focus on a reasoning that takes into account 4 different spatial scales:

1. EUROPEAN. Zagreb is proposed as a new European city lying between the east and west.
2. SPATIAL SCALE. Capital of Croatia is the political and economic center of the nation.
3. URBAN SCALE. Novi Grad as entrance to the historic city, but most of all, an element that mediate the relationship with the "no urban".
4. ARCHITECTURAL SCALE. The overall design of the project involves the construction of a new space based on the interconnectivity between the public / private spaces, the infrastructure system and the environment.

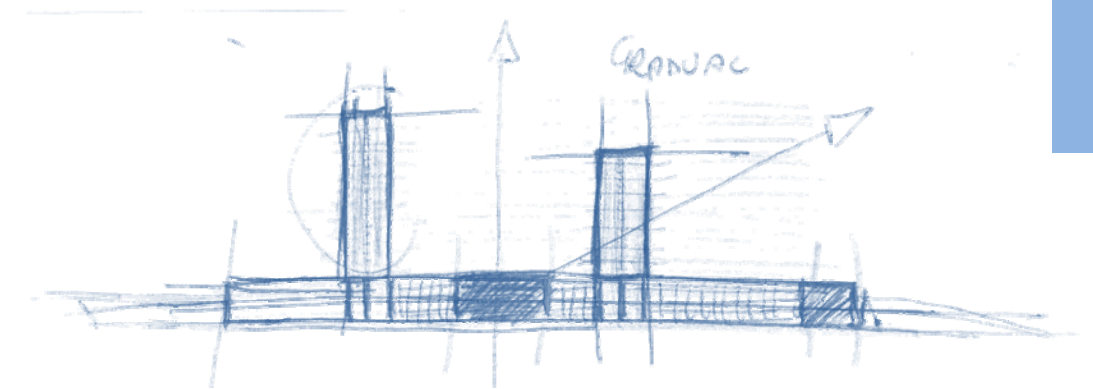
The "NOVI GRADUAL" is nothing but an attempt to create a project to regenerate the area through a series of strategies that go beyond the mere reality of architecture.

The project strategy seeks to overcome the urban chaos and spatial disorder of the place, turning them into possible potential for development, at the same time try to highlight all the positive characteristics that are part of it.

The urban disorder and the absence of a real network of public spaces, propose a strategy based on some sort of basic urban redevelopment.

The urban regeneration is based on "revitalization" of the area.

Regeneration to be achieved through the design of focused strategies, capable of triggering a chain of strong and shared decision-making.



The project idea has focused on the redefinition of some key points:

- Road setting, giving the role of texture, orientation and identification of urban space;
- making system of the infrastructural network in order to facilitate the intermodal exchange;
- Access and permeability of the Sava river's bank



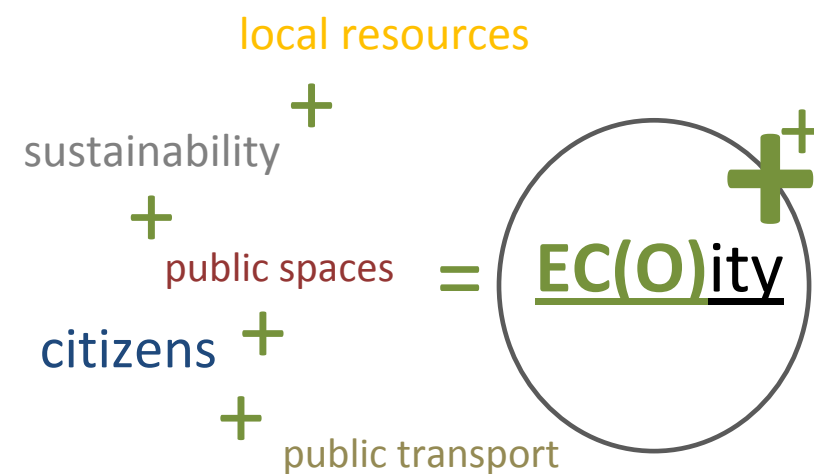
Design choices

- functional and typological mixité, able to generate and accept flows;
- landscape and environmental regeneration of the area.

This series of solutions covers the various scales of urban design.

The project moves through the provision of targeted actions, especially on open spaces, offering a series of new architectural elements that can establish itself as the new reference of the urban settlement and reshaping some problematic parts of the urban system.

URBAN VISION: Is based on shared and sustainable development, trying to draw a continuous public space.



The project

The main objective of the project is to solve the “urban chaos” caused by the lack of a precise drawing of the soil.

The project aims at a reorganization spatial and functional and at the same time tries to propose a unification of this urban area where actually seems to be no interaction.

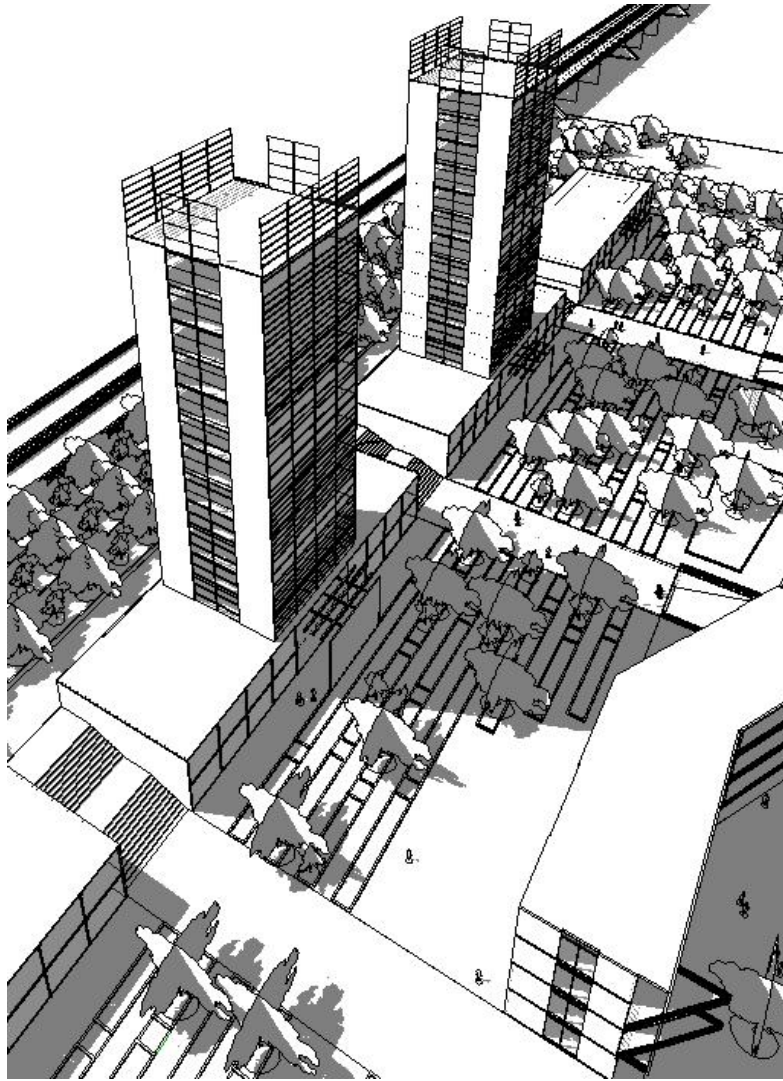
The aim is to create a self-sufficient urban system in which exists a continuity of open spaces, footpaths, green areas; a design of open spaces which finds its form through the creation of new urban areas, a form composed of elements interacting with each other.

The group has decided for a complete redevelopment of the areas A, B and C (area of the project). From the beginning it was thought to a drawing of the soil that would integrate with the surrounding area without changing its original form.

For area A, the idea is to create a green corridor that runs along the Sava, a "corridor" that includes within it the equipment support and service for the whole area.

To ensure the usability of the banks of the Sava River Working Group has imagined two main actions:

- a redrawing of the landscape near the river through the design of green areas along the banks



Design choices

- the realization of "play point", removable structures able to accommodate different functions in different times of year.

The proposal is the creation of a new multifunctional centre where facilities are active throughout the year, a centre capable of developing and revitalizing urban growth through the integration of utilities with different functions and uses.

The area B represents the core of the project. The starting point for the redesign of the area is enhancing the existing pedestrian routes and changing their section. Since the restoration and enhancement of these tracks were designed new buildings.

At the urban-architectural scale, the two towers present a reading by a contemporary language of some of the characteristics of the skyline of cities such as Zagreb.

The structure at the base will be inside shops, restaurants and public library.

The green areas, the park and "garden Zen", will be included between new urban front.

The area "C" completes the project. In this area will be inserted an important point of intermodal change and an business.

Conclusions

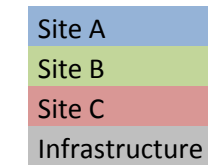
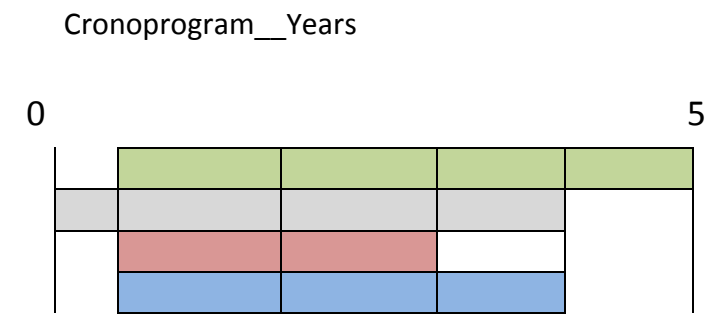
The development of the strategic choices of the project aims to introduce a new functional mixité and tries to amplify and value the existing site's vocations (commercial, tourist accommodation, etc.).

The strategic point of intervention is the expansion of the catchment area of the site. This expansion is achievable by grafting of functions capable of attracting the investment of private capital.

The future starts here.

Technical data

	Area	Percentage	
Site A__BUILT			
Residence	x	x	
Commercial	1100	11%	
Business/Receptive	1550		
Site A__GREEN AREAS			
Parks	6000	23%	
Gardens	19630	66%	
Site B__BUILT			
Residence	10490		
Commercial	8380	27%	
Business/Receptive	14970		
Public spaces	12065	41%	25630
Site B__GREEN AREAS			
Parks	6950	32%	
Gardens	2240		
Site C__BUILT			
Residence	2252		
Commercial	4610	48%	
Business/Receptive	2110		
Public spaces	4500	42%	
Site C__GREEN AREAS			
Parks	1030	10%	
Gardens	x	x	
PARKING			
		Capacity	
Site B	5612	280	
Site C	3010	150	



Introduction

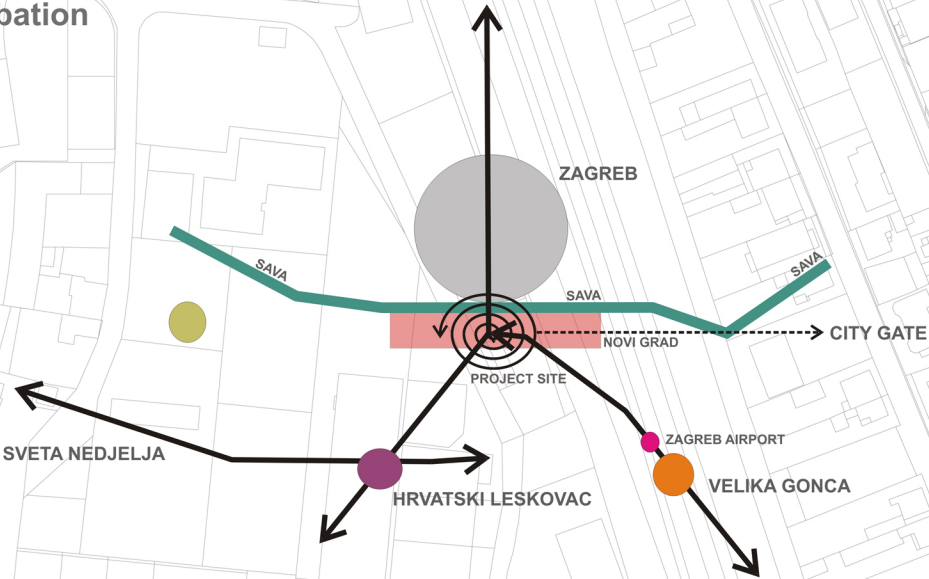
The project idea was created in harmony with the directions proposed by the auctioneer and the administration of the competition in Zagreb. The meaning and the image that come from some urban areas, can become an interesting potential for the design of places to "revitalize", where is possible to provide new forms of imagination of the city and its spaces. Possibilities are as many as choices that can be made by analyzing the natural features of the place, history and morphology of the city. The site represent a node of considerable strategic importance, not only for the city of Zagreb, but for the entire region. The strategic relevance of the area comes from both geographical position, (the site is situated in the south of the city center, hearth of Zagreb) and infrastructural dotation (motorway, railway, tramway). The plots in the area are not homogeneous and the orography of the site is characterized by different levels of altitude. The infrastructures on the area generate a barrier between the site and the surroundings , with no connection between the different systems of transportation. In the project we decide to solve the problem of accessibility in the area, by enhancing the transversal

permeability and providing a real interchange between the different transport systems. Starting from these issues and from the design guidelines proposed in the Notice of Competition, we formulated our project on the idea of place livability, trying to create livable spaces for the people. It's clear that this site is qualified to become a symbolic place as the main "gate" of the city. There are many relevant issues to deal: the relationship between Old Town and "Novi Grad"; the relationship between the city and the river; the importance of the infrastructural network and sustainable mobility. These issues were the basis of our project called "Novi Gradual".

Dual: Zagreb and Novi Grad

The aim of the project is to find a common code that makes dialogue between the formal, logistical and environmental characteristics of these different places: the old town and the new city. So we must imagine an architecture that is no longer definitive, as it was in the past century. This architecture is made of open and unsettled systems, and follows the logic of relational economy, entertainment and common work.

Conurbation

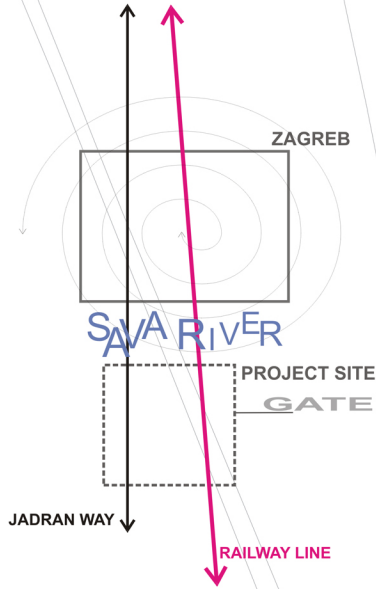


It will be a permeable urban settlement, as an open filter. This system doesn't work on the dualism between "inner private spaces" and "external open spaces", but on the relationship between space and territory. Working this way we avoid to close the different zones with definite and inflexible boundaries.

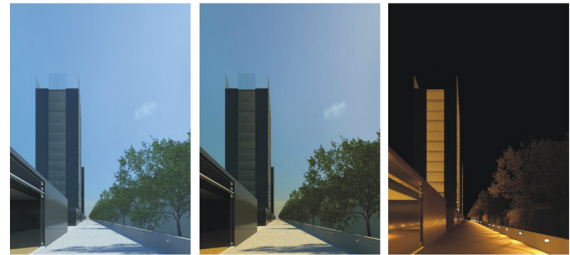
Gradual: the infrastructural system.

Infrastructural system is one of the relevant issues in the project. We started from the existing transportation systems to formulate the settlement. An appropriate approach may be to design an infrastructure that includes roads, cycleways, pedestrian path, lighting and facilities and natural elements. The Novi Grad is a place that must offer a GRADUAL interchange between different transport systems. A new system of roads also offer a new design for public and private spaces. We offer a new urban design with distinctive and relevant elements in the scheme.

URBAN SCALE



“LIGHT OF THE DAY”



Morning

Afternoon

Night

DESIGN CHOICES

The main objective of the project is to create a sustainable urban settlement , self-sufficient and able to promote new development scenarios to a wider geographical scale. A project, even if it involves a part of town, cannot fail to take account of the urban structure of which is essential. For this reason, the project will focus on a reasoning that takes into account 4 different spatial scales:

1. EUROPEAN. Zagreb is proposed as a new European city lying between the east and west.
2. SPATIAL SCALE. Capital of Croatia is the political and economic center of the nation.
3. URBAN SCALE. Novi Grad as entrance to the historic city, but most of all, an element that mediate the relationship with the “no urban”.
4. ARCHITECTURAL SCALE. The overall design of the project involves the construction of a new space based on the interconnectivity between the public / private spaces, the infrastructure system and the environment.

The “NOVI GRADUAL” is nothing but an attempt to create a project to regenerate the area through a series of strategies that go beyond the mere reality of architecture. The project strategy seeks to overcome the urban chaos and spatial disorder of the place, turning them into possible potential for development, at the same time try to highlight all the positive characteristics that are part of it. The urban disorder and the absence of a real network of public spaces, propose a strategy based on some sort of basic urban redevelopment.

The urban regeneration is based on “revitalization” of the area. Regeneration to be achieved through the design of focused strategies, capable of triggering a chain of strong and shared decision-making.

The project idea has focused on the redefinition of some key points:

- Road setting, giving the role of texture, orientation and identification of urban space;
- making system of the infrastructural network in order to facilitate the intermodal exchange;
- Access and permeability of the Sava river’s bank



View of the river

- functional and typological mixité, able to generate and accept flows;
- landscape and environmental regeneration of the area.

This series of solutions covers the various scales of urban design. The project moves through the provision of targeted actions, especially on open spaces, offering a series of new architectural elements that can establish itself as the new reference of the urban settlement and reshaping some problematic parts of the urban system.

URBAN VISION is based on shared and sustainable development, trying to draw a continuous public space.

The project

The main objective of the project is to solve the “urban chaos” caused by the lack of a precise drawing of the soil. The project aims at a reorganization spatial and functional and at the same time tries to propose a unification of this urban area where actually seems to be no interaction. The aim is to create a self-sufficient urban system in which exists a continuity of open spaces, footpaths, green areas; a design of open spaces which finds its form through the creation of new urban areas, a form composed of elements interacting with each other.

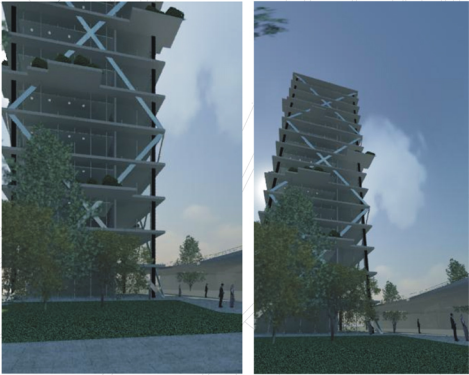
The group has decided for a complete redevelopment of the areas A, B and C (area of the project). From the beginning it was thought to a drawing of the soil that would integrate with the surrounding area without changing its original form.

For area A, the idea is to create a green corridor that runs along the Sava, a “corridor” that includes within it the equipment support and service for the whole area. To ensure the usability of the banks of the Sava River Working Group has imagined two main actions:

- a redrawing of the landscape near the river through the design of green areas along the banks
- the realization of “play point”: removable structures able to accommodate different functions in different times of year.

The proposal is the creation of a new multifunctional centre where facilities are active throughout the year , a centre capable of developing and revitalizing urban growth through the integration of utilities with different functions and uses.

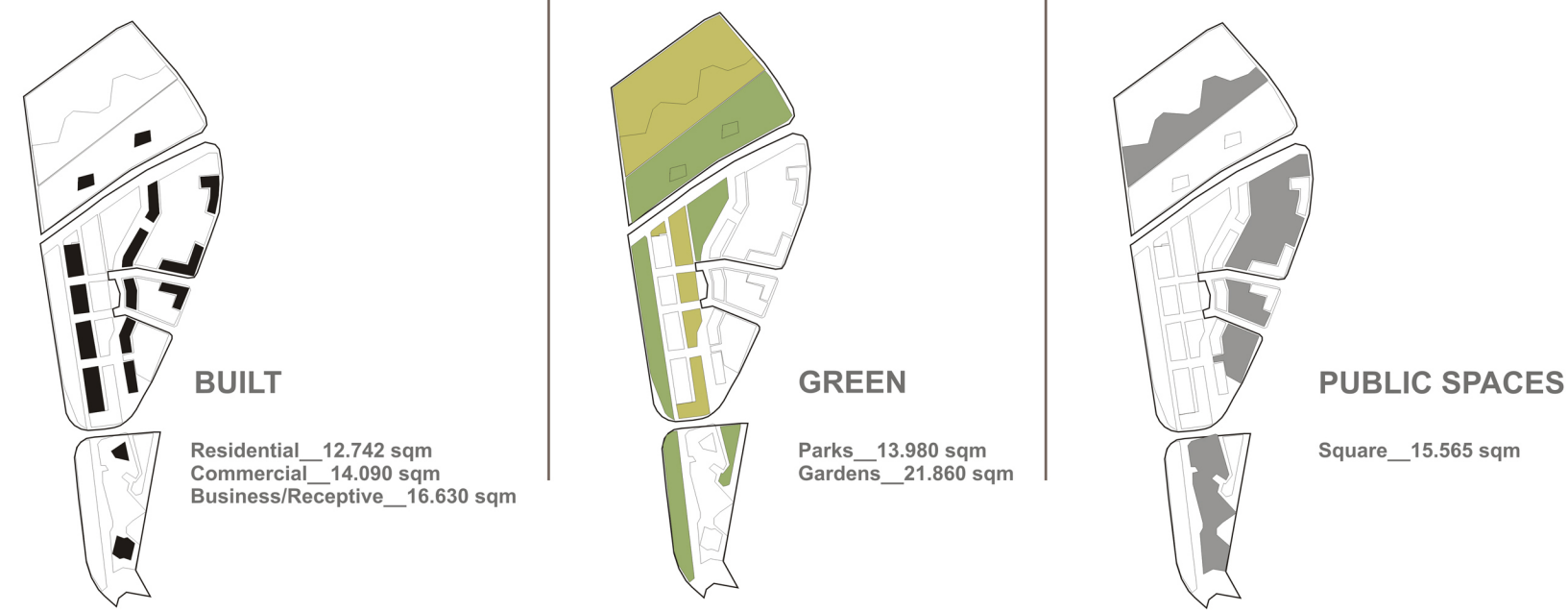
The area B represents the core of the project. The starting point for the redesign of the area is enhancing the existing pedestrian routes and changing their section. Since the restoration and enhancement of these tracks were designed new buildings.



Area C ___ The tower



CONCEPT SCHEME



At the urban-architectural scale, the two towers present a reading by a contemporary language of some of the characteristics of the skyline of cities such as Zagreb. The structure at the base will be inside shops, restaurants and public library.

The green areas, the park and "garden Zen", will be included between new urban front.

The area "C" completes the project. In this area will be inserted an important point of intermodal change and an business.

Conclusions

The development of the strategic choices of the project aims to introduce a new functional mixité and tries to amplify and value the existing site's vocations (commercial, tourist accommodation , etc..).

The strategic point of intervention is the expansion of the catchment area of the site. This expansion is achievable by grafting of functions capable of attracting the investment of private capital.

The future starts here.

Project image

