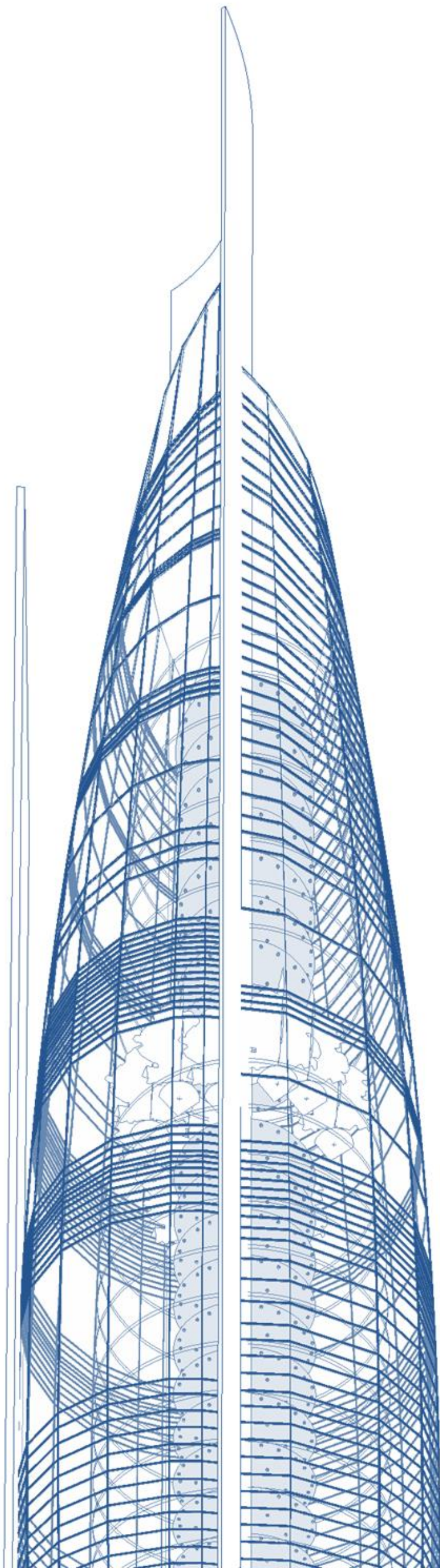


# eVolo

## Skyscraper competition

2010



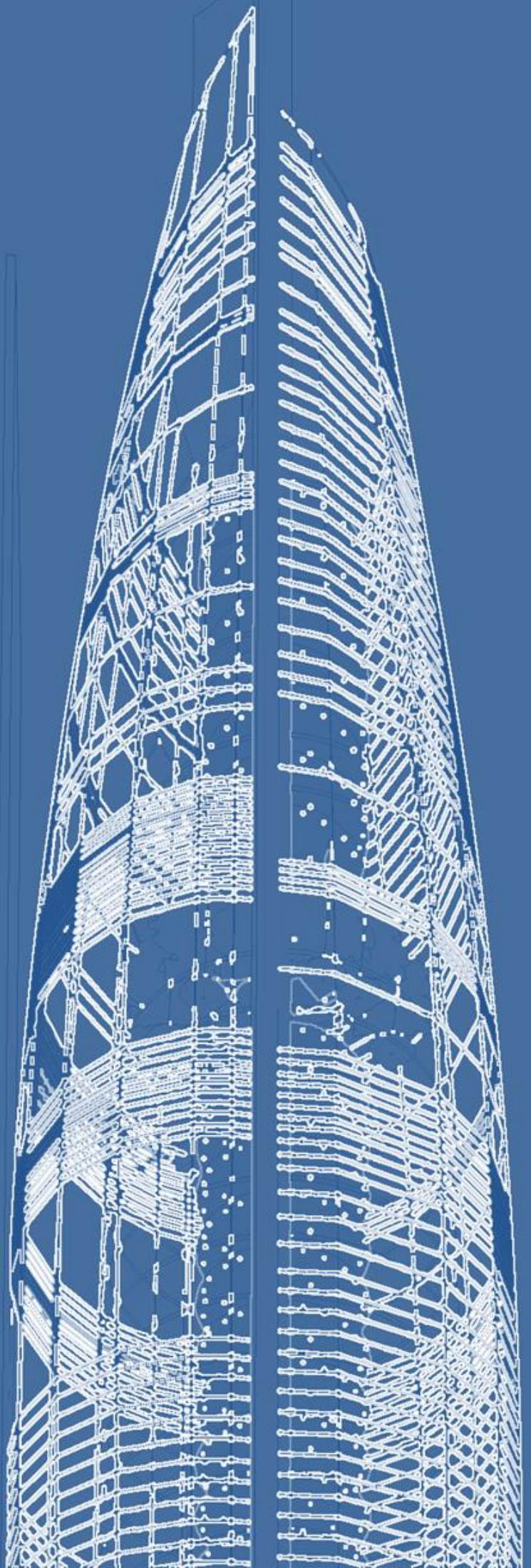
[www.effepiu.com](http://www.effepiu.com)





# DNA PLES

Dynamic Natural Architecture





# eVolo

## Skyscraper competition

### 2010

While designing a tower fulfils the greatest challenge in the upward reach, it also contributes a presence in the skyline of the cities.

The 40 storey building's basic shape is simple. The tower is very slender, does not use mirrored or tinted glass because the transparency is very important in this project.

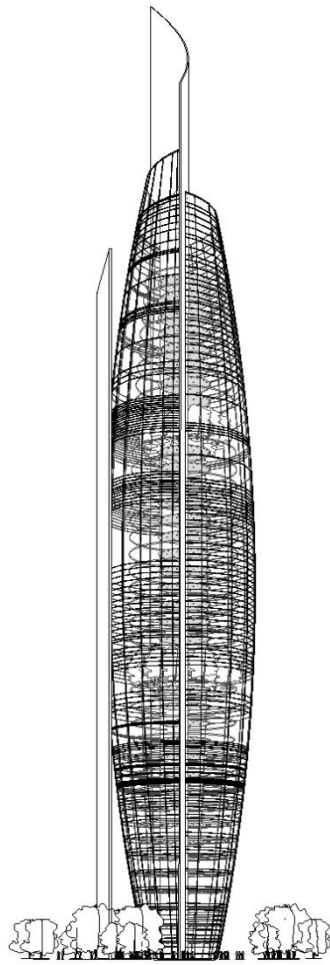
On the contrary, the use of clear glass combined with a pattern of thin ceramic cylinders placed on a steel framework, positionated one to two feet in front of the glass, from bottom to top. This system of curtain wall will permit a high degree of energy efficiency in heating and cooling of the building.

This massing strategy also stabilished a dialogue to the context of the immediate urban environment.

The fate of Bagnoli industrial area is developed in the mid-nineteenth century, when the Bay of Naples was chosen as a privileged place for the settlement of industrial artifacts. Bagnoli is situated in the north west of the city of Napoli. In 1910 the factory ILVA is inaugurated in Bagnoli. The factory was equipped with two batteries of coke ovens, three blast furnaces of 250 ton/d, five hearth furnaces Martin Siemens of 50 tons, a department of lamination consisting of a blooming and two rolling mills for billets, and large and medium prefabricated.

There is nothing left of the area that was once used for swimming.

In the 1991 all production activities of ILVA ends once for all.



The skyscraper will have a certain importance as a keynote in this part of the city, and this circumstance calls for the study of the relationship between the new building and the historic presence, since it arises as an intermediary between the latter and its extension.

Today Bagnoli hopes for a future that can give it the beauty and the sea of time gone by.





# eVolo

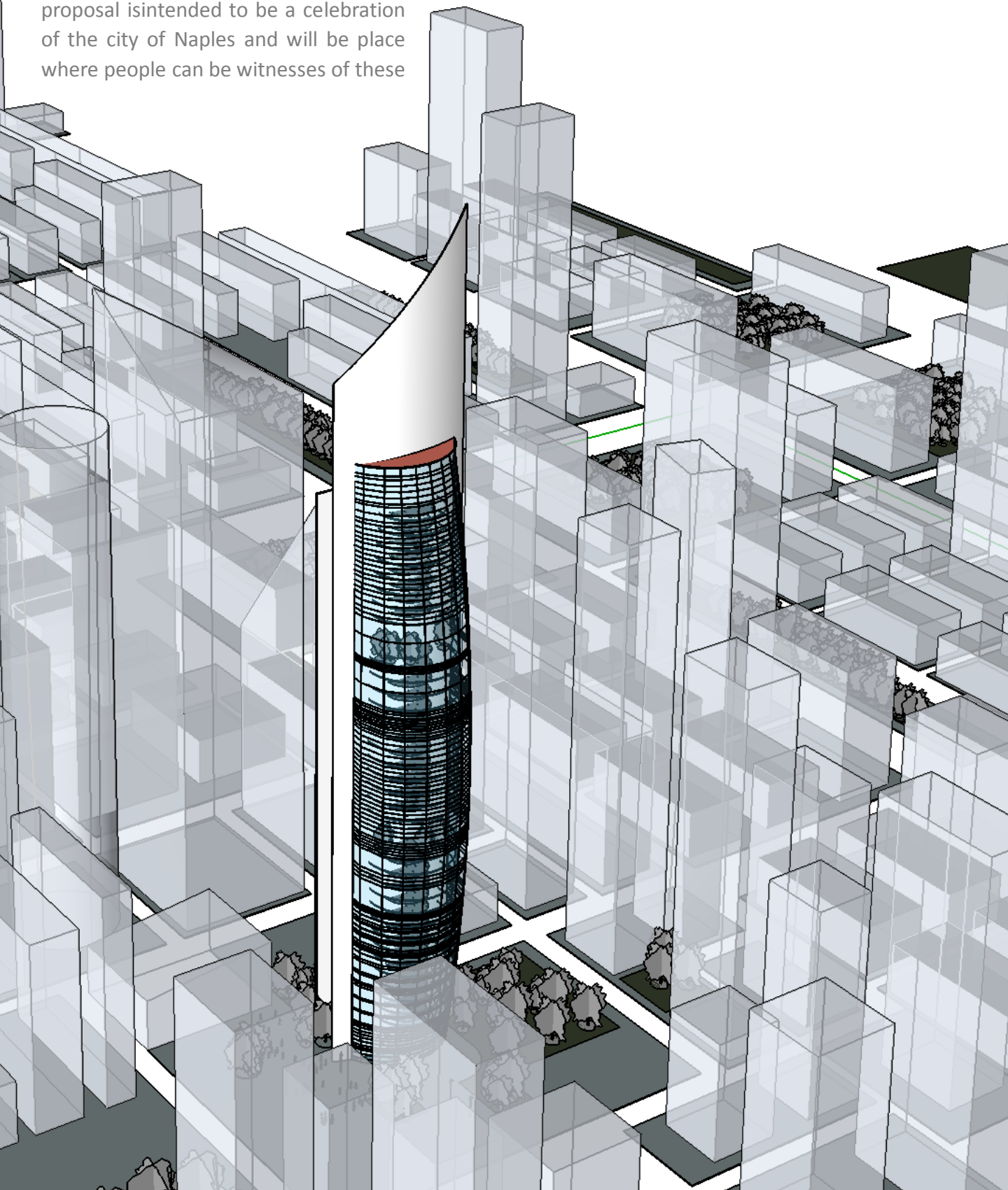
## Skyscraper competition

### 2010

The world's cities are frantically scrambling to rebuild their identities through signs, symbols, buildings, statements, events and programmes. In this scenario the skyscraper represents the city of the future.

Human beings have always tried to approach the sky. Designing and constructing a high rise means establishing a link between the hearth and the sky. The skyscraper represents a symbol of a basic principle of architectural measuring of the future.

The project, located at the edge of town, is characterized by being immersed in a natural environment with a power and a unique beauty. The proposal is intended to be a celebration of the city of Naples and will be placed where people can be witnesses of these



# eVolo

## Skyscraper competition

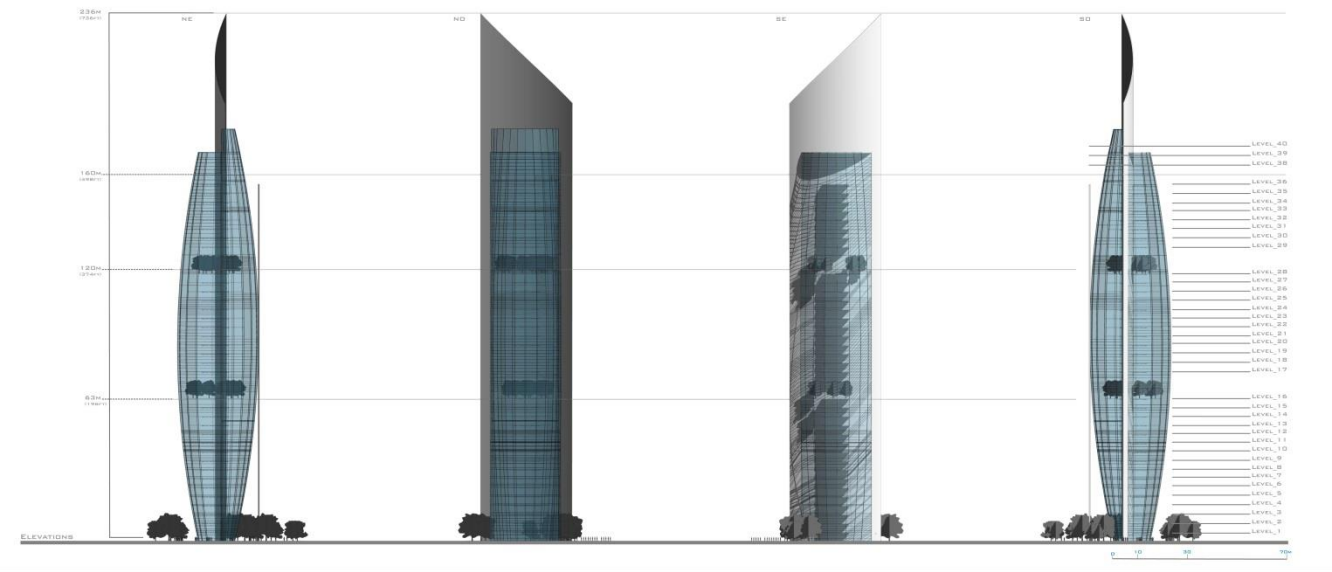
### 2010

two elements: the beauty of the place and the technology past and future.

The visual quality of the design is considered to be of utmost interest because it will be a freestanding building next to the sea and one highly visible from the wide avenues of the Posillipo hill. At the same time the project is positionated to offer a view of the valley of the Campi Flegrei from its topmost floors, a view it is difficult to obtain at present.

In this project the skyscraper is a real vertical city; creating a new center not only entails physical change but means a place where things happen that are central to Naples identity as a city, a place that can become a key in the collective minds of citizens and visitors a like.

**D NAPLES**  
DYNAMIC NATURAL ARCHITECTURE



### SITE AND STORY



# eVolo

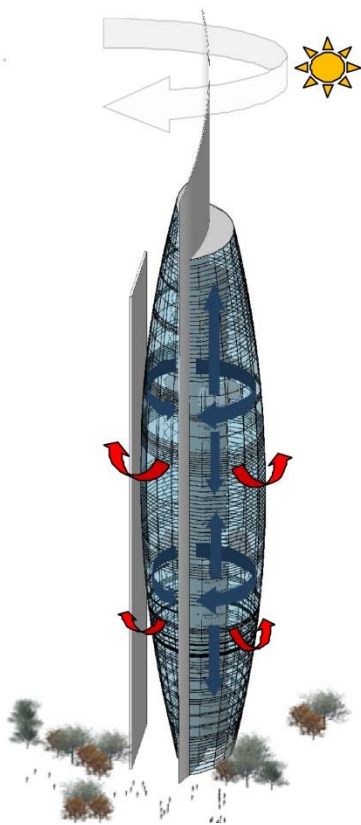
## Skyscraper competition

### 2010

Ecologically, through widespread use of sustainable and environmentally compatible systems, the project confers a maximum degree of confort to both interior and exterior spaces, reducing waste of resources (energy and water) and limiting noxious emissions and the production of waste material.

An important objective is the balance between artificial and natural elements in order to create an urban setting that is innovative.

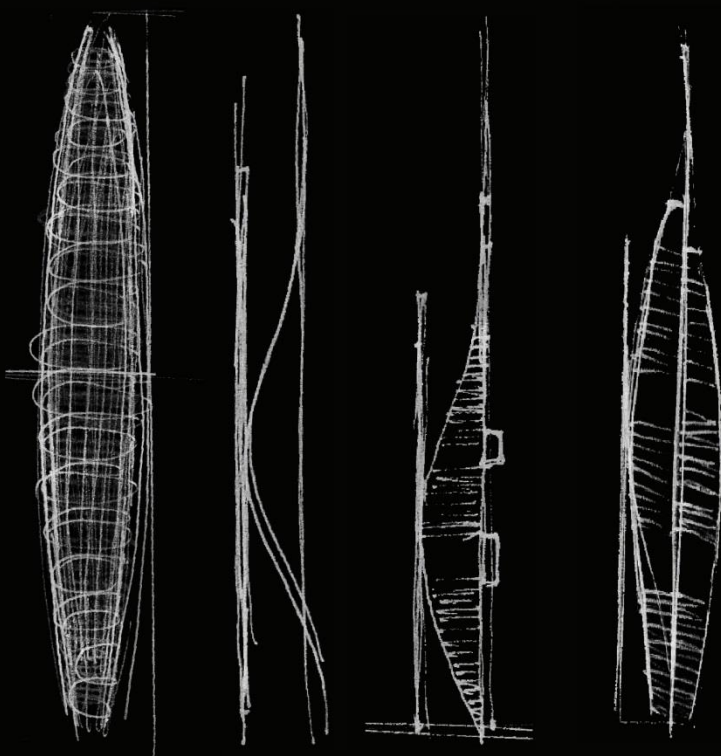
#### SOLAR SCHEME



This does not means constructing an urban environment that is already present, but making the new development fertile ground for the cultural idea that the city has expressed historically throughout its trasformation processes.

## CONCEPT

LIKE THE DNA IS THE SYMBOL OF THE HUMAN LIFE, THIS TOWER WOULD BE THE SYMBOL OF THE FUTURE AND THE MODERN ARCHITECTURE.

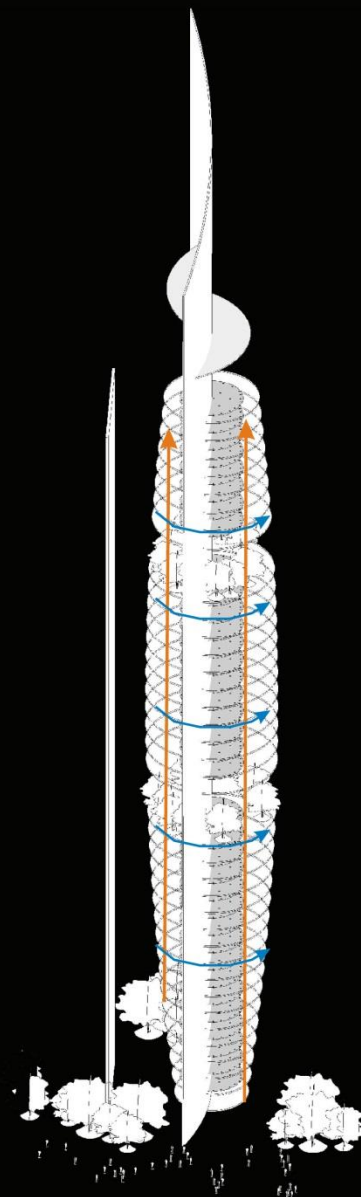


## SCHEME

THE CIRCULATION IN THE TOWER IS DIVIDED IN TO TWO PRIMARY CONDITIONS: VERTICAL TRAFFIC AND HORIZONTAL TRAFFIC. THIS CIRCULATION IS ACHIEVED THROUGH A SYSTEM OF ESCALATORS THAT ALLOWS ACCESS TO ALL OF THE STOREY SPACES WITHIN THE SKYSCRAPER.

#### LEGEND

- VERTICAL TRAFFIC
- HORIZONTAL TRAFFIC





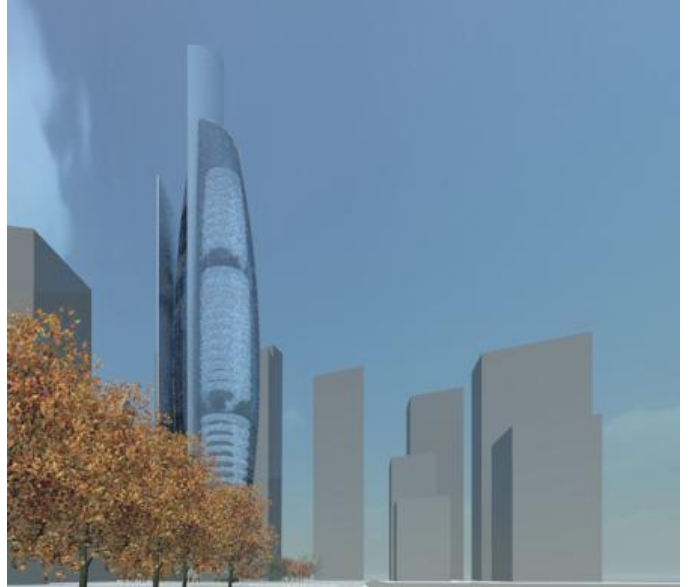
# eVolo

## Skyscraper competition

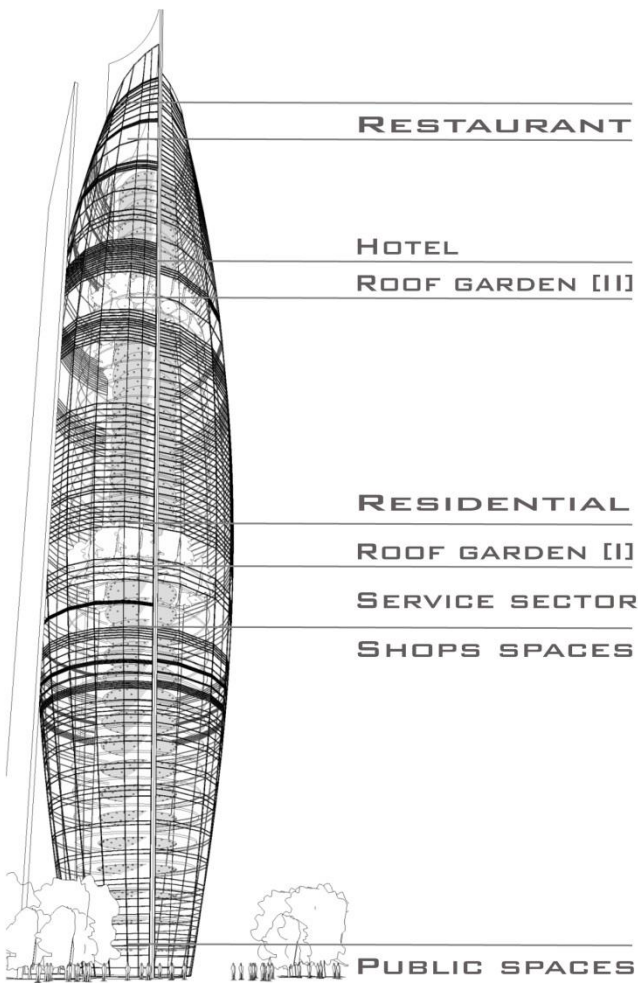
### 2010

Dna is inspired by the new composition solutions and meanings design of many skyscrapers of the twentyfirst century: more complex relationship with the environment and the surrounding and larger functions within their perimeter.

As these new skyscrapers, Dna is a real urban development projects on large scale, a building with several urban functions that are merged according to the key vertical.



#### VOLUMETRIC CONSISTENCY



SKYSCRAPER: 40 STOREY WITH CIRCULAR PLAN, H 236 M.

PUBLIC SPACES: LEVEL\_0 AT LEVEL\_2  
LEVEL\_16 ROOF GARDEN [I]  
LEVEL\_28 ROOF GARDEN [II]

SHOPS SPACES: LEVEL\_3 AT LEVEL\_13

RESIDENTIAL: LEVEL\_17 AT LEVEL\_27

HOTEL: LEVEL\_29 AT LEVEL\_36

RESTAURANT: LEVEL\_38 AT LEVEL\_40





[www.effepiu.com](http://www.effepiu.com)